



Mercer County Cooperative Extension Service  
Dana R. Anderson  
Extension Agent for 4-H Youth Development  
1007 Lexington Road, Harrodsburg, Kentucky 40330  
Phone - 859-734-4378 Fax - 859-734-4379  
Email - dana.anderson@uky.edu  
Web Address: <http://mercer.ca.uky.edu>

# Mercer County 4-H September 2024 NEWSLETTER



## JOIN MERCER COUNTY 4-H



Enrollment in Mercer County 4-H is a vital step to any level of participation in 4-H. Enrollment allows staff to provide more up-to-date and detailed information and better plan and program throughout the year.

Whether you plan on participating in a club, attend a workshop, or 4-H Summer Camp, enroll now to stay up-to-date.



SCAN ME

OPEN TO  
YOUTH AGES  
5-19 YEARS OLD  
(Cloverbuds 5-8  
year olds)

REGISTER ONLINE  
<http://v2.4honline.com>  
or  
Complete form at  
Extension Office

Facebook Page:  
Mercer County 4-H (KY)

Instagram:  
mercer4hky

Mercer Co. Extension  
Office  
1007 Lexington Road,  
Harrodsburg, KY  
859-734-4378

Enrollment is FREE  
and most activities  
are free or  
scholarships available

To learn more visit us on  
the web:  
<https://mercer.ca.uky.edu/>

3rd - 8th Grade Students - Mercer County 4-H will begin in September/October and have 4-H club meetings in the classroom during school time. All students will be 4-H members in their classroom. Students will come home with additional information in September. Each month we do educational activities in the classrooms.

### AFTERSCHOOL TRANSPORTATION TO EXTENSION OFFICE

Please notify the Extension Office if you need a ride to 4-H Club Meeting/Activities after school. Elementary youth must also send a note to school. **YOU MUST CALL 734-4378 PRIOR to the Event.** The Extension Van will make runs to pick up student at schools.



### Mercer County 4-H Youth Development Staff:

Dana Anderson, Mercer County Extension  
Agent for 4-H Youth Development

Deanna Ashmore, Mercer County  
Extension 4-H Program Assistant

## Join Mercer 4-H To Do List

- Join us on Facebook for updates - Mercer County 4-H (KY)
- Fill out enrollment forms for each child (5-18 years Old)
- Join Text Reminds for interested clubs
- Read the 4-H newsletter each month for information
- Call the office before the club meeting for van transportation from school to Mercer Co. Extension Office, 1007 Lexington Road Harrodsburg 859-734-4378
- Enjoy a variety of activities within 4-H!

SHAKER VILLAGE

Fall  
**HARVEST**  
FESTIVAL



**VOLUNTEERS  
NEEDED**

TO ASSIST WITH MERCER COUNTY COOPERATIVE EXTENSION  
BOOTH

INCLUDES WORKING FUN INTERACTIVE GAME STATIONS  
VOLUNTEERS WILL RECEIVE  
FREE ADMISSION TO FESTIVAL

**September 28-29, 2024**  
**Shaker Village**

Festival will run from 10:00am - 4:00pm  
Volunteer times are 3 hours

For more information or to volunteer

<https://bit.ly/Extensionharvest24>

Mercer County Cooperative Extension - 859-734-4378





MERCER 4-H

HOLIDAY ONE  
STOP SHOP

NOV. 2  
9:00-3:00

NEW LOCATION  
AT THE STABLE  
AT THE  
FAIRGROUNDS

560 LINDEN AVENUE  
HARRODSBURG

\$6 LUNCH AVAILABLE  
VENDORS WANTED  
FOR INFORMATION CALL  
859-734-4378 OR EMAIL -  
DEANNA.ASHMORE@UKY.EDU



18 USC 707

# KENTUCKY 4-H ACHIEVEMENT PROGRAM

It provides an opportunity for youth to be recognized for their accomplishments during their 4-H career, as well as develop their skills in record keeping, completing applications, and potentially interviewing.

Youth who complete the application will be recognized on the county and state levels.

Financial scholarships are awarded to youth who receive bronze, silver, gold, or emerald levels on the state level.

Youth can start the program at any time.  
Youth must be between 10-19 years old.

**Applications for 2024 are due  
November 1, 2024**

**For more information, contact:  
Dana Anderson, Mercer County Extension Agent for  
4-H Youth Development  
(859)-734-4378  
or  
dana.anderson@uky.edu**

**Cooperative  
Extension Service**

Agriculture and Natural Resources  
Family and Consumer Sciences  
4-H Youth Development  
Community and Economic Development

**MARTIN-GATTON COLLEGE OF AGRICULTURE, FOOD AND ENVIRONMENT**

Educational programs of Kentucky Cooperative Extension serve all people regardless of economic or social status and will not discriminate on the basis of race, color, ethnic origin, national origin, creed, religion, political belief, sex, sexual orientation, gender identity, gender expression, pregnancy, marital status, genetic information, age, veteran status, physical or mental disability or reprisal or retaliation for prior civil rights activity. Reasonable accommodation of disability may be available with prior notice. Program information may be made available in languages other than English.  
University of Kentucky, Kentucky State University, U.S. Department of Agriculture, and Kentucky Counties, Cooperating.  
Lexington, KY 40506



Disabilities  
accommodated  
with prior notification.

# Mercer County 4-H Livestock Club



- Open to all youth 6-18 years old
- Focus on: Beef, Dairy, Sheep, Goat & Swine
- Youth **MUST** have 6 hours of classroom instruction through 4-H activities to show livestock or compete in livestock events
- The Club will meet on the 3rd Tuesday of each month at 6:00 p.m. at the Mercer County Extension Office
  - September 17
  - October 15
  - November 19
  - December 17



Scan code to join text remind notification.

Any adult interested in being a livestock leader,  
please contact the  
Mercer County Extension Office 859-734-4378

Cooperative  
Extension Service

Agriculture and Natural Resources  
Family and Consumer Sciences  
4-H Youth Development  
Community and Economic Development

MARTIN-GATTON COLLEGE OF AGRICULTURE, FOOD AND ENVIRONMENT

Educational programs of Kentucky Cooperative Extension serve all people regardless of economic or social status and will not discriminate on the basis of race, color, ethnic origin, national origin, creed, religion, political belief, sex, sexual orientation, gender identity, gender expression, pregnancy, marital status, genetic information, age, veteran status, physical or mental disability or reprisal or retaliation for prior civil rights activity. Reasonable accommodation of disability may be available with prior notice. Program information may be made available in languages other than English. University of Kentucky, Kentucky State University, U.S. Department of Agriculture, and Kentucky Counties, Cooperating. Lexington, KY 40506



Disabilities  
accommodated  
with prior notification.



# CAT CLUB



September 16  
 October 21  
 November 18  
 December 16  
 January 27

February 17  
 March 17  
 April 21  
 May

**@ 6:00 p.m.**



**Mercer Co. Extension**  
**1007 Lexington Rd**  
**Harrodsburg, KY**  
**859-734-4378**

**You will get to have hands-on experiences while learning about domestic cats and their wild cat cousins as well**

**Open to both Cloverbuds and regular 4-H Members**

## Cooperative Extension Service

Agriculture and Natural Resources  
 Family and Consumer Sciences  
 4-H Youth Development  
 Community and Economic Development

## MARTIN-GATTON COLLEGE OF AGRICULTURE, FOOD AND ENVIRONMENT

Educational programs of Kentucky Cooperative Extension serve all people regardless of economic or social status and will not discriminate on the basis of race, color, ethnic origin, national origin, creed, religion, political belief, sex, sexual orientation, gender identity, gender expression, pregnancy, marital status, genetic information, age, veteran status, physical or mental disability or reprisal or retaliation for prior civil rights activity. Reasonable accommodation of disability may be available with prior notice. Program information may be made available in languages other than English. University of Kentucky, Kentucky State University, U.S. Department of Agriculture, and Kentucky Counties, Cooperating.

Lexington, KY 40506



Disabilities accommodated with prior notification



# 4/5 GRADE 4-H CLUB

YOUTH WILL FOCUS ON HANDS ON COOKING, GAMES, WOODWORKING AND MORE

FOR ALL YOUTH IN GRADES 4 & 5

CLUB MEETS ON THE 3RD THURSDAY OF THE MONTH AT THE MERCER COUNTY EXTENSION OFFICE

SEPTEMBER 19

OCTOBER 17

NOVEMBER 21

DECEMBER 19

3:30

TO

5:00 P.M.

JANUARY 16

FEBRUARY 20

MARCH 20

APRIL 17

MAY 15



SCAN CODE TO JOIN TEXT REMIND NOTIFICATION.

YOUTH MUST RSVP EACH MONTH BY CALLING 859-734-4378

Cooperative Extension Service

Agriculture and Natural Resources  
Family and Consumer Sciences  
4-H Youth Development  
Community and Economic Development

MARTIN-GATTON COLLEGE OF AGRICULTURE, FOOD AND ENVIRONMENT

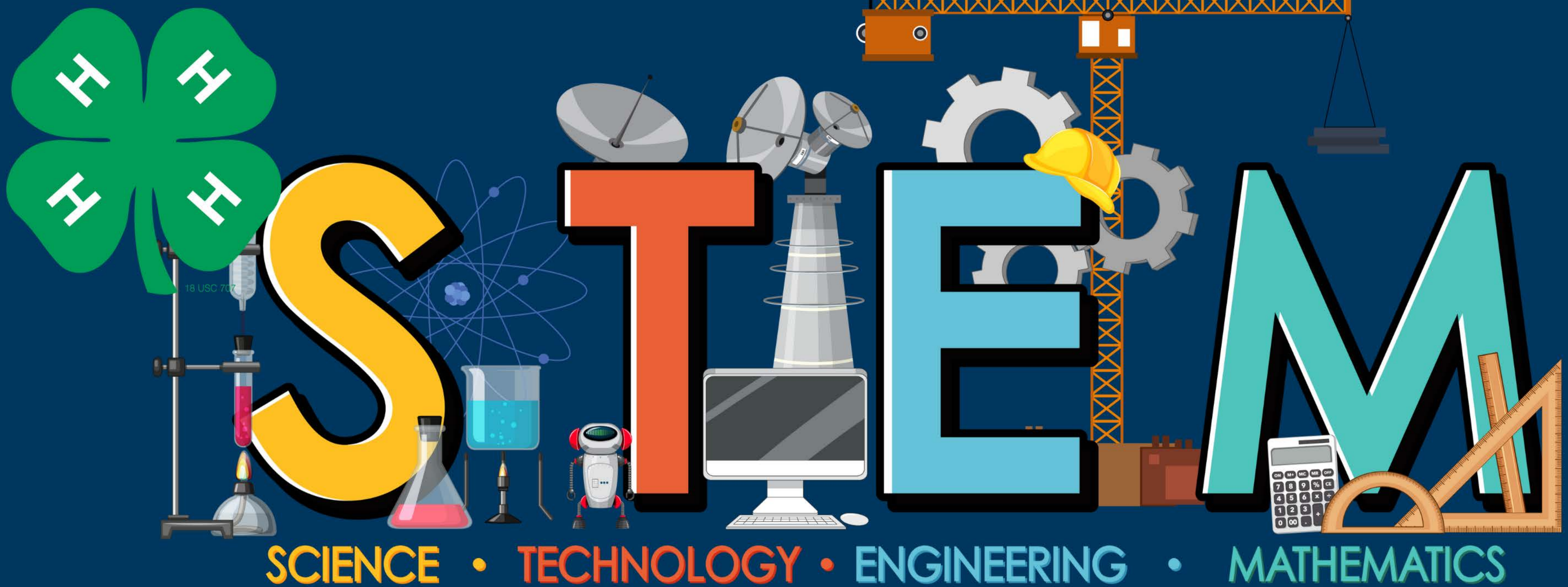
Educational programs of Kentucky Cooperative Extension serve all people regardless of economic or social status and will not discriminate on the basis of race, color, ethnic origin, national origin, creed, religion, political belief, sex, sexual orientation, gender identity, gender expression, pregnancy, marital status, genetic information, age, veteran status, physical or mental disability or reprisal or retaliation for prior civil rights activity. Reasonable accommodation of disability may be available with prior notice. Program information may be made available in languages other than English. University of Kentucky, Kentucky State University, U.S. Department of Agriculture, and Kentucky Counties, Cooperating. Lexington, KY 40506



Disabilities accommodated with prior notification.



# MERCER COUNTY 4-H



**YOUTH WILL FOCUS ON HANDS ON SCIENCE BASED ACTIVITIES**

**OPEN TO ALL AGES 6-18  
YOUTH 6-8 MUST HAVE ADULT STAY**

**CLUB MEETS ON THE 4TH MONDAY OF THE MONTH  
MERCER COUNTY EXTENSION OFFICE**

**SEPTEMBER 23**

**OCTOBER 28**

**NOVEMBER 25**

**JANUARY 27**

**6:00 P.M.**

**FEBRUARY 24**

**MARCH 24**

**APRIL 28**

**MAY 26**



**SCAN CODE TO JOIN TEXT REMIND  
NOTIFICATION**

## **Cooperative Extension Service**

Agriculture and Natural Resources  
Family and Consumer Sciences  
4-H Youth Development  
Community and Economic Development

## **MARTIN-GATTON COLLEGE OF AGRICULTURE, FOOD AND ENVIRONMENT**

Educational programs of Kentucky Cooperative Extension serve all people regardless of economic or social status and will not discriminate on the basis of race, color, ethnic origin, national origin, creed, religion, political belief, sex, sexual orientation, gender identity, gender expression, pregnancy, marital status, genetic information, age, veteran status, physical or mental disability or reprisal or retaliation for prior civil rights activity. Reasonable accommodation of disability may be available with prior notice. Program information may be made available in languages other than English. University of Kentucky, Kentucky State University, U.S. Department of Agriculture, and Kentucky Counties, Cooperating. Lexington, KY 40506



Disabilities  
accommodated  
with prior notification.



# 4-H HORSE CLUB MEETING



3rd Thursday of each month @  
Mercer Co. Extension Office  
6:30 p.m.

September 19

October 17

November 21

December 19

January 16

February 20

March 20

April 17

May 15



Youth will learn the basics of  
horsemanship, horse health,  
equine related careers and more.  
Open to youth 9 -18 years old

Cooperative  
Extension Service

Agriculture and Natural Resources  
Family and Consumer Sciences  
4-H Youth Development  
Community and Economic Development

MARTIN-GATTON COLLEGE OF AGRICULTURE, FOOD AND ENVIRONMENT

Educational programs of Kentucky Cooperative Extension serve all people regardless of economic or social status and will not discriminate on the basis of race, color, ethnic origin, national origin, creed, religion, political belief, sex, sexual orientation, gender identity, gender expression, pregnancy, marital status, genetic information, age, veteran status, physical or mental disability or reprisal or retaliation for prior civil rights activity. Reasonable accommodation of disability may be available with prior notice. Program information may be made available in languages other than English. University of Kentucky, Kentucky State University, U.S. Department of Agriculture, and Kentucky Counties, Cooperating. Lexington, KY 40506



Disabilities  
accommodated  
with prior notification.

# 4-H Cooking Clubs

## 4-H Foods Club

Open to youth 9-11 year olds  
1st/2nd year in foods club

The club meets monthly on the 2nd Tuesday of the month  
after school @ Mercer Co. Extension Office  
3:30-5:00 p.m.

Please RSVP Every month 859-734-4378

September 10  
October 15  
November 12  
December 10

January 14  
February 11  
March 11  
April 15  
May 13

Scan the code to join the text remind



FREE

## 4-H Teen Cooking Club

Open to youth 12 + year olds, Advanced skill level  
The club meets monthly on the 2nd Tuesday of the month  
Mercer Co. Extension Office  
5:30 - 7:00 p.m.

Please RSVP every month 859-734-4378

September 10  
October 15  
November 12  
December 10

January 14  
February 11  
March 11  
April 15  
May 13

Scan the code to join the text remind



Cooperative  
Extension Service

Agriculture and Natural Resources  
Family and Consumer Sciences  
4-H Youth Development  
Community and Economic Development

MARTIN-GATTON COLLEGE OF AGRICULTURE, FOOD AND ENVIRONMENT

Educational programs of Kentucky Cooperative Extension serve all people regardless of economic or social status and will not discriminate on the basis of race, color, ethnic origin, national origin, creed, religion, political belief, sex, sexual orientation, gender identity, gender expression, pregnancy, marital status, genetic information, age, veteran status, physical or mental disability or reprisal or retaliation for prior civil rights activity. Reasonable accommodation of disability may be available with prior notice. Program information may be made available in languages other than English. University of Kentucky, Kentucky State University, U.S. Department of Agriculture, and Kentucky Counties, Cooperating. Lexington, KY 40506



Disabilities  
accommodated  
with prior notification.

# Mercer County 4-H Sewing Club



**Free!**  
**9 years and up!**  
**Learn how to sew or practice your skill**  
**Leave with a completed item each time**  
**Bring your own lunch**

**Meetings on**  
**Saturdays**  
**November 9**  
**January 11**  
**April 12**

**10:00 am-  
2:00 pm**

**Join our text  
remind for updates  
and to RSVP when  
it's time**



**Cooperative  
Extension Service**

Agriculture and Natural Resources  
Family and Consumer Sciences  
4-H Youth Development  
Community and Economic Development

**MARTIN-GATTON COLLEGE OF AGRICULTURE, FOOD AND ENVIRONMENT**

Educational programs of Kentucky Cooperative Extension serve all people regardless of economic or social status and will not discriminate on the basis of race, color, ethnic origin, national origin, creed, religion, political belief, sex, sexual orientation, gender identity, gender expression, pregnancy, marital status, genetic information, age, veteran status, physical or mental disability or reprisal or retaliation for prior civil rights activity. Reasonable accommodation of disability may be available with prior notice. Program information may be made available in languages other than English.  
University of Kentucky, Kentucky State University, U.S. Department of Agriculture, and Kentucky Counties, Cooperating.

Lexington, KY 40506



Disabilities  
accommodated  
with prior notification.

# MERCER COUNTY 4-H

## OUTDOOR EXPLORERS CLUB

Join us as we explore the outdoors throughout the year!

Club meets at various times throughout the year based on each event we attend.

Add this group on remind to get updates on where we'll go next!

Open to all ages!  
(6-8 year old's must have an adult with them)

- Hiking
- Water Activities
- Tours
- Cooking
- Challenges
- And More!



Scan the qr Code to join the text remind group or text 81010 with @cloverout

**FIRST MEETING**  
Astronomy in the Field  
Shaker Village  
Saturday, September 28 8:00 p.m.  
All parents/guardians must stay

**Cooperative Extension Service**

Agriculture and Natural Resources  
Family and Consumer Sciences  
4-H Youth Development  
Community and Economic Development

**MARTIN-GATTON COLLEGE OF AGRICULTURE, FOOD AND ENVIRONMENT**

Educational programs of Kentucky Cooperative Extension serve all people regardless of economic or social status and will not discriminate on the basis of race, color, ethnic origin, national origin, creed, religion, political belief, sex, sexual orientation, gender identity, gender expression, pregnancy, marital status, genetic information, age, veteran status, physical or mental disability or reprisal or retaliation for prior civil rights activity. Reasonable accommodation of disability may be available with prior notice. Program information may be made available in languages other than English. University of Kentucky, Kentucky State University, U.S. Department of Agriculture, and Kentucky Counties, Cooperating. Lexington, KY 40506



Disabilities accommodated with prior notification.

# JUNIOR MASTER NATURALISTS



LEARN ABOUT PLANTS, ANIMALS,  
WATER, AND MORE.

YOUTH WHO COMPLETE THE  
ENTIRE PROGRAM WILL BE  
CERTIFIED JUNIOR MASTER  
NATURALIST.

OPEN TO YOUTH 9-12 YEARS OLD

SEPTEMBER 24	JANUARY 28
OCTOBER 22	FEBRUARY 25
NOVEMBER 26	MARCH 25
DEC. NO MEETING	APRIL 22
	MAY 27

MEETS ON THE 4TH TUESDAY OF MONTH  
3:30 - 5:00

@

MERCER COUNTY EXTENSION OFFICE  
1007 LEXINGTON ROAD  
HARRODSBURG, KY 40330

TO JOIN TEXT REMIND SCAN THE QR CODE →



PARTICIPANTS MUST RSVP BY  
CALLING 859-734-4378.

**Cooperative  
Extension Service**

Agriculture and Natural Resources  
Family and Consumer Sciences  
4-H Youth Development  
Community and Economic Development

**MARTIN-GATTON COLLEGE OF AGRICULTURE, FOOD AND ENVIRONMENT**

Educational programs of Kentucky Cooperative Extension serve all people regardless of economic or social status and will not discriminate on the basis of race, color, ethnic origin, national origin, creed, religion, political belief, sex, sexual orientation, gender identity, gender expression, pregnancy, marital status, genetic information, age, veteran status, physical or mental disability or reprisal or retaliation for prior civil rights activity. Reasonable accommodation of disability may be available with prior notice. Program information may be made available in languages other than English. University of Kentucky, Kentucky State University, U.S. Department of Agriculture, and Kentucky Counties, Cooperating.

Lexington, KY 40506



Disabilities  
accommodated  
with prior notification.

# Mercer County 4-H Natural Resources Club

Meets on the 3rd Wednesday of the month  
Mercer County Extension Office  
3:30 a.m. - 5:00 p.m.

Open to  
youth 9-18  
years old



Youth will focus on forestry project:  
Leaf prints, Leaf Collections, Compass and Pacing, and more

Youth will also have the opportunity to compete at State  
competitions.



Scan the code to join the text remind

## RSVP by Calling 859-734-4378

**Cooperative  
Extension Service**

Agriculture and Natural Resources  
Family and Consumer Sciences  
4-H Youth Development  
Community and Economic Development

**MARTIN-GATTON COLLEGE OF AGRICULTURE, FOOD AND ENVIRONMENT**

Educational programs of Kentucky Cooperative Extension serve all people regardless of economic or social status and will not discriminate on the basis of race, color, ethnic origin, national origin, creed, religion, political belief, sex, sexual orientation, gender identity, gender expression, pregnancy, marital status, genetic information, age, veteran status, physical or mental disability or reprisal or retaliation for prior civil rights activity. Reasonable accommodation of disability may be available with prior notice. Program information may be made available in languages other than English.  
University of Kentucky, Kentucky State University, U.S. Department of Agriculture, and Kentucky Counties, Cooperating.  
Lexington, KY 40506



Disabilities  
accommodated  
with prior notification.



# Mercer County 4-H

# SALVISA 4-H

# CLUB



Meets every 3rd Thursday  
of the month Starting in

September 19

6:00 - 7:00 p.m.

Ruritan Building in Salvisa

404 Main St. Salvisa

Scan the qr  
code to join  
the remind  
group!



Community Service,  
projects, crafts, and so  
much more!

**Cooperative  
Extension Service**

Agriculture and Natural Resources  
Family and Consumer Sciences  
4-H Youth Development  
Community and Economic Development

**MARTIN-GATTON COLLEGE OF AGRICULTURE, FOOD AND ENVIRONMENT**

Educational programs of Kentucky Cooperative Extension serve all people regardless of economic or social status and will not discriminate on the basis of race, color, ethnic origin, national origin, creed, religion, political belief, sex, sexual orientation, gender identity, gender expression, pregnancy, marital status, genetic information, age, veteran status, physical or mental disability or reprisal or retaliation for prior civil rights activity. Reasonable accommodation of disability may be available with prior notice. Program information may be made available in languages other than English.  
University of Kentucky, Kentucky State University, U.S. Department of Agriculture, and Kentucky Counties, Cooperating.

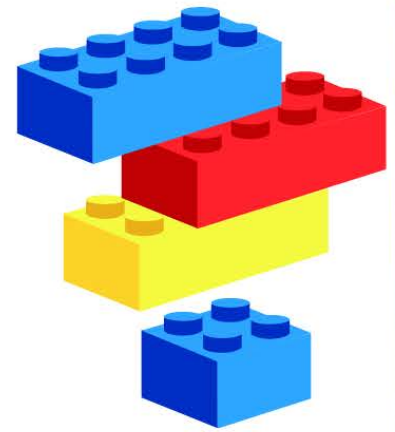


Disabilities  
accommodated  
with prior notification.

Lexington, KY 40506

# LEGO BUDS

Youth will use Legos to build a specific item each month. Youth will then share their design with the entire group

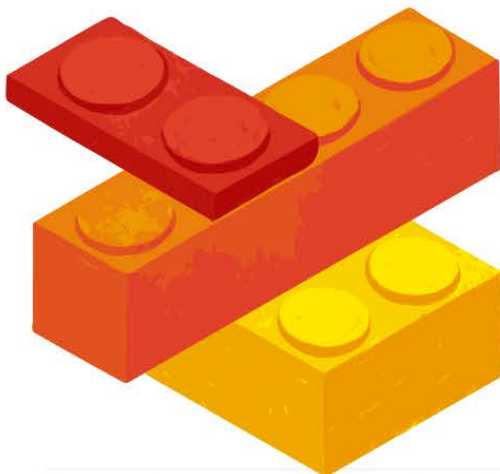


Open to youth K-3rd grade

MEETS ON THE 2ND MONDAY OF THE MONTH  
AT THE MERCER COUNTY EXTENSION OFFICE  
3:30-5:00 P.M.

SEPTEMBER 9  
OCTOBER 14  
NOVEMBER 11  
DECEMBER 9

JANUARY 13  
FEBRUARY 10  
MARCH 10  
APRIL 14  
MAY 12



TO JOIN TEXT  
REMIND SCAN  
THE QR CODE

Cooperative  
Extension Service

Agriculture and Natural Resources  
Family and Consumer Sciences  
4-H Youth Development  
Community and Economic Development

MARTIN-GATTON COLLEGE OF AGRICULTURE, FOOD AND ENVIRONMENT

Educational programs of Kentucky Cooperative Extension serve all people regardless of economic or social status and will not discriminate on the basis of race, color, ethnic origin, national origin, creed, religion, political belief, sex, sexual orientation, gender identity, gender expression, pregnancy, marital status, genetic information, age, veteran status, physical or mental disability or reprisal or retaliation for prior civil rights activity. Reasonable accommodation of disability may be available with prior notice. Program information may be made available in languages other than English.  
University of Kentucky, Kentucky State University, U.S. Department of Agriculture, and Kentucky Counties, Cooperating.  
Lexington, KY 40506



Disabilities  
accommodated  
with prior notification.



# CLOVERBUDS AFTERSCHOOL



## 1ST TUESDAY OF EACH MONTH

OCTOBER 1  
NOVEMBER 12\*  
DECEMBER 3  
JANUARY 7

FEBRUARY 4  
MARCH 4  
APRIL 8\*  
MAY 6

3:30- 5:00

- Election Day & Spring Break

Text to 81010 with message  
@clovermer to join Cloverbud  
Afterschool text remind and RSVP  
for club meetings or scan qr code.



**AT THE MERCER COUNTY  
EXTENSION OFFICE**

1007 LEXINGTON ROAD  
HARRODSBURG

**MUST RSVP TO ATTEND  
FREE TO ATTEND  
SNACK PROVIDED**

**FOR QUESTIONS  
CALL (859)734-4378**

**UK** Martin-Gatton  
College of Agriculture,  
Food and Environment  
University of Kentucky.

### Cooperative Extension Service

Agriculture and Natural Resources  
Family and Consumer Sciences  
4-H Youth Development  
Community and Economic Development

### MARTIN-GATTON COLLEGE OF AGRICULTURE, FOOD AND ENVIRONMENT

Educational programs of Kentucky Cooperative Extension serve all people regardless of economic or social status and will not discriminate on the basis of race, color, ethnic origin, national origin, creed, religion, political belief, sex, sexual orientation, gender identity, gender expression, pregnancy, marital status, genetic information, age, veteran status, physical or mental disability or reprisal or retaliation for prior civil rights activity. Reasonable accommodation of disability may be available with prior notice. Program information may be made available in languages other than English. University of Kentucky, Kentucky State University, U.S. Department of Agriculture, and Kentucky Counties, Cooperating. Lexington, KY 40506



Disabilities  
accommodated  
with prior notification.

MERCER COUNTY 4-H

# HOMESCHOOL CLUB

PROJECT FOCUSED



Every 1st Thursday of the month  
12:00 - 1:00 pm  
At Mercer County Extension Office  
1007 Lexington Road



**PLEASE NOTE MUST RSVP  
EACH MONTH SO WE HAVE  
ENOUGH SUPPLIES BY  
CALLING 859-734-4378**



**TO JOIN SCAN  
THE QR CODE**



**Cooperative  
Extension Service**

Agriculture and Natural Resources  
Family and Consumer Sciences  
4-H Youth Development  
Community and Economic Development

**MARTIN-GATTON COLLEGE OF AGRICULTURE, FOOD AND ENVIRONMENT**

Educational programs of Kentucky Cooperative Extension serve all people regardless of economic or social status and will not discriminate on the basis of race, color, ethnic origin, national origin, creed, religion, political belief, sex, sexual orientation, gender identity, gender expression, pregnancy, marital status, genetic information, age, veteran status, physical or mental disability or reprisal or retaliation for prior civil rights activity. Reasonable accommodation of disability may be available with prior notice. Program information may be made available in languages other than English. University of Kentucky, Kentucky State University, U.S. Department of Agriculture, and Kentucky Counties, Cooperating. Lexington, KY 40506



Disabilities  
accommodated  
with prior notification.



MERCER COUNTY 4-H

# HOMESCHOOL 4-H CLUB

**FREE TO  
ATTEND**



Join our Mercer County 4-H Homeschool Club as we do a variety of lessons, activities, trips, and more this year! An adult is expected to stay with their child for every meeting.

Scan the QR code to join →



**1ST WEDNESDAY  
OF THE MONTH  
@11:00 A.M.** & **3RD MONDAY  
OF THE MONTH  
@11:00 A.M.**

**Mercer County Extension Office  
1007 Lexington Road**



**Cooperative  
Extension Service**

Agriculture and Natural Resources  
Family and Consumer Sciences  
4-H Youth Development  
Community and Economic Development

**MARTIN-GATTON COLLEGE OF AGRICULTURE, FOOD AND ENVIRONMENT**

Educational programs of Kentucky Cooperative Extension serve all people regardless of economic or social status and will not discriminate on the basis of race, color, ethnic origin, national origin, creed, religion, political belief, sex, sexual orientation, gender identity, gender expression, pregnancy, marital status, genetic information, age, veteran status, physical or mental disability or reprisal or retaliation for prior civil rights activity. Reasonable accommodation of disability may be available with prior notice. Program information may be made available in languages other than English. University of Kentucky, Kentucky State University, U.S. Department of Agriculture, and Kentucky Counties, Cooperating. Lexington, KY 40506



Disabilities accommodated with prior notification.